

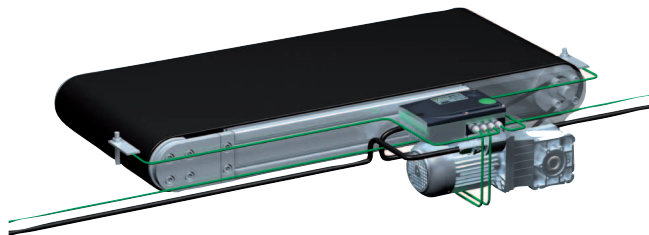
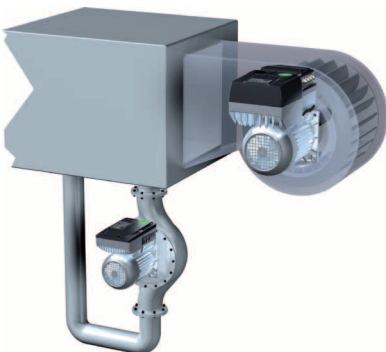
# Efficiently and consistently decentralized.



The compact 8400 motec motor inverter is an attractive alternative, particularly for intralogistic applications as well as pumps and fans and guarantees a high degree of efficiency in every respect. It can be mounted either on the geared motor or on the wall and is available in a power range of .50 to 10.0 Hp (0.37 to 7.5 kW).

## Highlights

- IP65 as standard
- Energy savings of up to 30% are possible in connection with the MF motor series, which is exclusively tailored to the motor inverter
- Large LED ensures that operating status is clearly visible from a distance



# Inverter Drives 8400 motec – at a glance

## The drive unit – simple handling

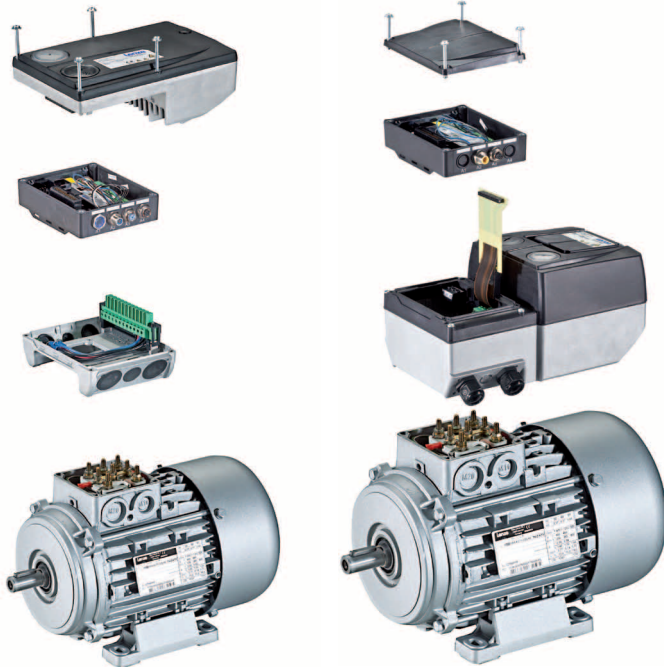
- Simple commissioning via DIP switch, potentiometer or diagnosis terminal
- Easy to replace memory module
- Large LED status display – clearly visible, even under the most challenging installation conditions

## The communication unit – functionality on site

- CANopen, PROFIBUS, PROFINET, EtherCAT, EtherNET/IP and AS interface
- Includes integrated STO safety technology
- I/Os on board
- Pluggable M-12 connection system for communication, safety engineering and sensor technology or via screwed connections

## The wiring unit – easily accessible and simple to connect

- Flexible connection options such as cable glands and various plug connections
- Connection for brake resistor
- Spring-applied brake control



8400 motec .50 Hp to 4.0 Hp  
(0.37 to 3.0 kW)

8400 motec 5.0 to 10.0 Hp  
(4.0 to 7.5 kW)

<b>Functions</b>	<ul style="list-style-type: none"> <li>Freely assignable user menu</li> <li>Motor identification</li> <li>V/f control with/without encoder (linear or square-law)</li> <li>“VFC eco”</li> <li>Flying restart circuit</li> <li>S-ramps for smooth acceleration and deceleration</li> <li>I<sup>2</sup>t motor monitoring</li> <li>DC injection brake</li> <li>Fixed frequencies</li> <li>Parameter change-over</li> <li>PID controller</li> <li>Integrated, wear free brake control</li> </ul>
<b>Properties</b>	<ul style="list-style-type: none"> <li>Protection against short circuits, earth faults, overvoltage, motor stalling</li> <li>Integrated interference suppression in accordance with EN 61800-3, category C2, category C1 motor mounted ≤ 2.0 Hp (1.5 kW)</li> <li>Protection against restart for cyclic mains switching</li> <li>Usable in an IT system</li> <li>Safe torque off (STO), EN ISO 13849-1 (PL e), EN 61508/EN 62061 (SIL 3)</li> <li>Approvals: CE, UR, cUR, RoHS</li> </ul>