

# Roller Conveyor Outline 4000

Lenze Smart Products

# RCO-4000



## Solved with

- Bevel gearbox g500-B240
- Lenze Smart Motor m300-MXXMAXX 080-32

## Characteristics

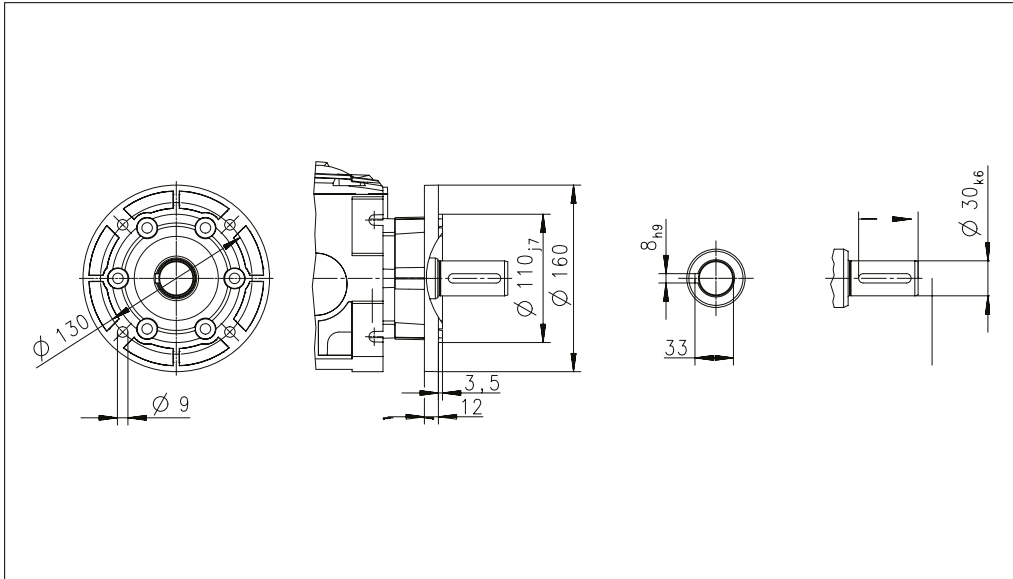
Application parameters		Construction data	
Maximum payload	4,000 kg	Chain acc. to DIN8187, ISO 606	10B-1
Cycle time	Up to 300 units/h	Effective circular diameter of double sprocket Inner diameter	14 teeth ( $d_0$ 71.34 mm) 30 H7 with featherkey
Max. acceleration	0.5 m/s <sup>2</sup>	Chain laying	Single chains, from roller to roller
Conveyor speed range (setting values)	0.1 – 0.5m/s (24.2 – 115 1/min)	Max. loading point	Solid shaft end
Conveyor speed (setting values)	0.5 m/s (115 1/min)	Carrying roller • Diameter • Double sprocket	89 mm 15 teeth ( $d_0$ 76.35 mm)
Alignment speed up to 1,300 kg (setting values)	0.1 m/s (24.2 1/min)	Solid shaft diameter Solid shaft length	30 <sub>k6</sub> 60 mm
		Shaft-hub joint	Featherkey – 8 <sub>h9</sub>
		Flange diameter Pitch circle	160 mm 4 x 130 mm
		Mounting position	universal
		Weight	23,9 kg

General ambient conditions		Electromechanical properties of the drive solution	
Temperature ranges	0 – 40 °C	El. connection system • Power (type) • Control signals (type)	• 3 x 400V up to 480V (via QuickOn) • 2 x M12 (4pol, A-coded, plug)
Approvals	CE, UL, CSA, EAC, CCC	Brake resistor	integrated
Degree of protection	IP55	Electromechanical brake	none
Surface	Aluminium (unpainted)		

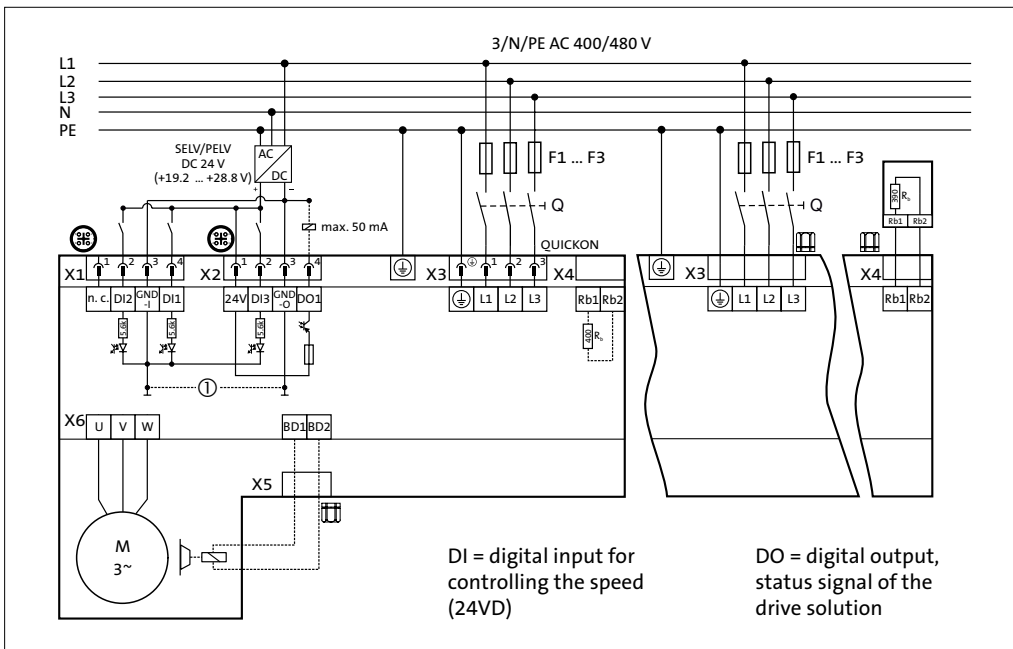
# Roller Conveyor Outline 4000

Lenze Smart Products

## Fixing dimensions



## Electrical connection plan



## More details

CAD file	E-Plan Makro	Design basis	Mounting instructions	App Lenze Smart Motor	PC connection Lenze Smart Motor
